

# BSC-10

## Entry-level Hand-held CCD Barcode Scanner



A general-purpose, entry-level CCD hand-held scanner for 1D barcode scanning, suitable for your basic barcode scanning needs.

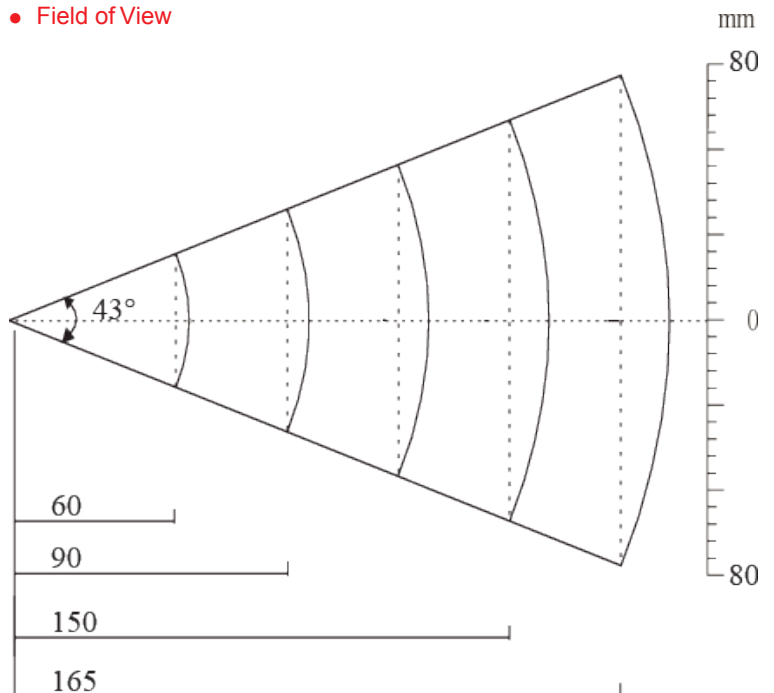
### Product Features

- **Easy to Operate**

This is well-designed and ergonomic hand-held CCD scanner can be used in various applications such as retail, logistics, office automation and many more. With its superslim body (only 16mm), a scan speed of up to 200 scans/per second and a decode distance of more than 16cm, it is an excellent choice for your entry-level scanning needs.

### Decode Zones

- **Field of View**



- **Decode Distances**

Barcode	Density(mil)	Near(mm)	Far(mm)
EAN/UPC	4	10	60
EAN/UPC	5	10	90
EAN/UPC	10	10	150
EAN/UPC	13	10	165

## **BSC-10 Specifications**

### **Performance**

Image Sensor	Linear CCD
Interface	USB-HID
Symbologies	Code 39, Code 32, Code 128, Code 93, Code 11, Codabar, All UPC/EAN/JAN Code (EAN-13, EAN-8, UPC-A, UPC-E, EAN-128), Interleaved 2 of 5, Chinese Postage Code, MSI/PLESSY, etc.
Precision	≥ 4mil
Light Source	Red LED 660 nm
Scanning Speed	200 scans per second
Depth of Scan Field	0 mm - 165mm
Print Contrast Signal	≥ 45%
Roll	43°
Pitch	30°
Yaw	43°
Illumination	0 ~ 10,000 LUX

### **Mechanical/ Electrical**

Voltage	DC 5.0V
Current	Oper. 130mA
	Idle 30mA
Colours	Black
IP Rating	IP30
Weight	85g

### **Environment**

Operate Temperature	0°C to +50°C
Storage Temperature	-26°C to +60°C
Humidity	10% - 80% ( non-condensing )

### **Certifications**

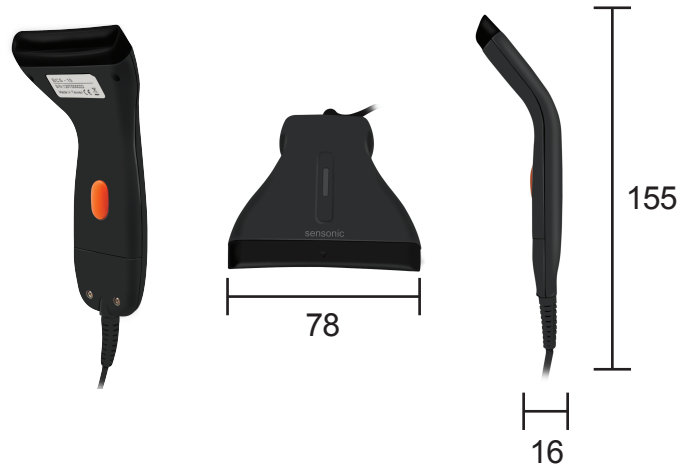
FCC Part15 Class B, CE EMC Class B

## **Accessories**

### **Flex Cable**

RS232	This fixed cable connects to the RS232 port of the BSC-10 to connect to a standard male RS232 port. With a power port to accept power adapter supply.
USB	This fixed cable connects to the USB Slave port of the BSC-10 to connect to standard USB Host port.
PS/2	This cable connect to the KBW port of the BSC-10 to a standard PS/2 Host port.

## **Dimensions (mm)**



## **Applicable Accessories**

### **• User Manual / Programming Guide**

A manual to explain the user the basics of the scanner and how to configure it. Furthermore, it enables the user to set the scanner to the specific wishes regarding scanning modes, readable barcodes and barcode formats.